

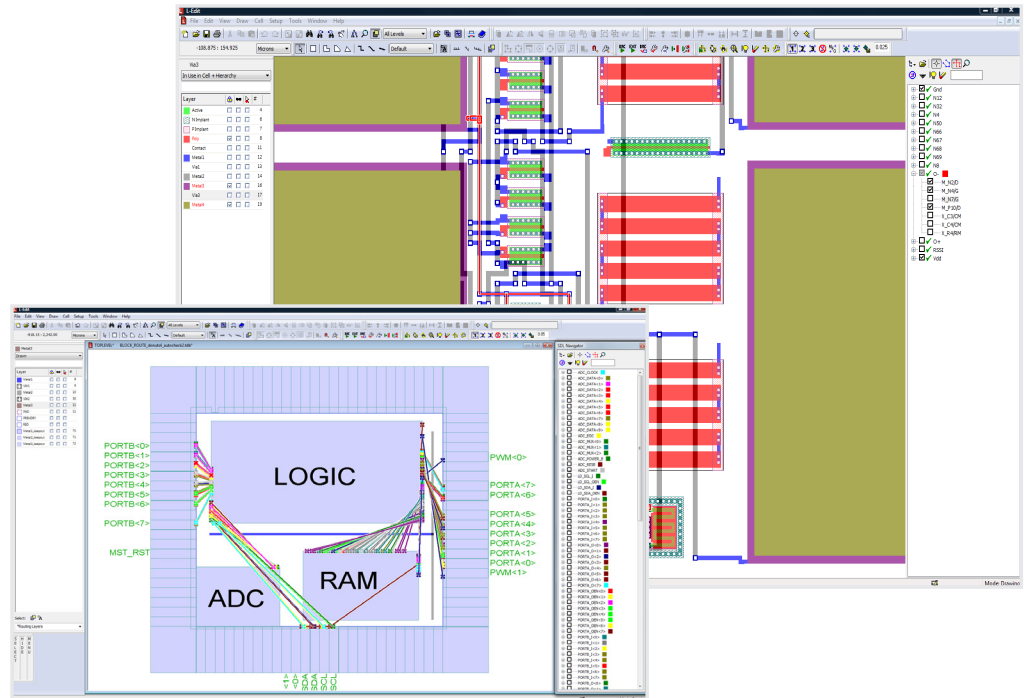
## SCHEMATIC DRIVEN LAYOUT AND AUTO-ROUTER

### Product Benefits

- Increase the speed and quality of custom layout.
- Manage the routing flow and allow the designer to focus on layout quality.
- Increase productivity and save designers from tedious effort on non-critical nets with the automatic router.
- Create layout that matches the schematic the first time and get consistent results.

### Product Features

- Import a netlist from any schematic tool.
- Automatically instance all needed subcells, including parameterized cells.
- Track Engineering Change Orders (ECOs).
- Display flylines allowing you to place your blocks to minimize routing congestion.
- Mark existing geometry as part of a specific net allowing selection, highlighting, and rip-up of geometry by net to capture the designer's intent.
- Automatic routing engine optimized for analog cells and top-level chip assembly routing.
- Interactively hand route entire nets or just critical sections and let the router complete the rest.
- Easy setup with one GUI dialog containing all router settings.
- Supports up to 8 metal layers.
- Automatically route wide traces with support for multiple vias used for layer transitions.



## Speeding Concept to Silicon

### Schematic Driven Layout (SDL)

SDL takes L-Edit's renowned productivity and flexibility to the next level by bringing knowledge of the schematic into the layout tool.

### Make Best Practices Automatic

SDL encourages good design practices by keeping close synchronization between the schematic and the layout. Names of devices, cells and nets will be automatically set. Drawn routing is automatically labeled with the net name, for easy inspection and management.

### Automate Repetitive Tasks

Increase productivity and eliminate errors with automatic instancing of cells and parameterized devices. If device parameters change later, parameterized cells will be automatically updated.

### Improve Your Layout

With real-time net flylines, you can optimize your placement to avoid routing congestion and place related devices near each other for better matching. With net highlighting, it's easy to optimize routing to avoid noisy or sensitive nets.

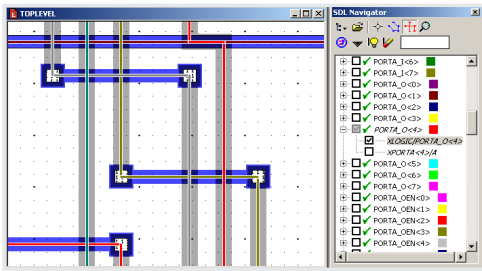
### Track Your Progress

SDL keeps track of which nets and pins have been routed, so you will always know what's left to do. When the design changes, SDL compares the old and new netlists and displays icons in the SDL Navigator showing you exactly which nets and pins have been modified.

Since routing geometries are tagged, you can easily highlight and rip up nodes, making Engineering Change Orders a breeze.

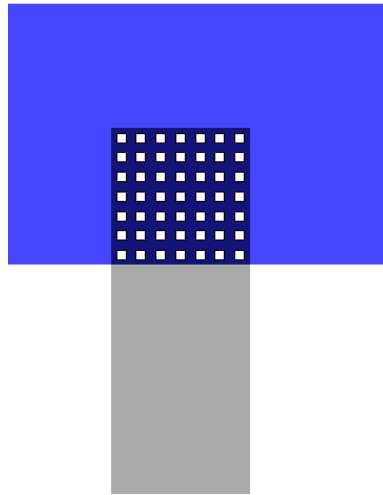
## SDL Router

Layout engineers spend a significant amount of their time routing nodes that are not performance-critical. Manual routing is the only way to achieve maximum performance on some nodes, but the majority just need to be correctly and reasonably connected. SDL Router is an automatic routing engine integrated directly into SDL. It speeds layout by allowing the designer to focus on routes that require expensive hand craftsmanship for performance or addressing analog-sensitive nets or parts of nets, then letting the tool automatically route the non-critical nets. In addition to its analog routing functions, SDL Router makes an excellent top-level chip integration router.



SDL Router is interactively controlled by a layout engineer through the SDL graphical user interface. It automatically uses the routing geometries drawn by the user, and runs on all or a specified subset of nodes on each pass. Users can manually route part of a net and have the router automatically finish routing the rest.

Find out what SDL and SDL Router can do for your design challenges.  
Contact us at [DesignChallenge@tannereda.com](mailto:DesignChallenge@tannereda.com) for a 30-day evaluation.



### Automatic Trace Width Selection

SDL Router uses a weighted spanning tree to select the correct wire width for each segment of a net. Wide traces automatically use appropriately sized vias on layer transitions.

### Easy to Use

SDL Router is entirely driven by the L-Edit SDL graphical interface. DRC rules and routing layers are configured in a simple dialog.

**Tanner**  
**EDA**

#### Corporate Headquarters

825 South Myrtle Avenue  
Monrovia, CA 91016-3424 USA  
Tel: +1-626-471-9700  
Toll Free: 877-325-2223  
Fax: +1-626-471-9800  
Email: [sales@tannereda.com](mailto:sales@tannereda.com)  
Web: [www.TannerEDA.com](http://www.TannerEDA.com)

#### Tanner Research Japan K.K.

Burex Kojimachi 6F  
3-5-2 Kojimachi, Chiyoda-ku,  
Tokyo 〒102-0083  
Japan  
Tel: +81 (03) -3239-2840  
Fax: +81 (03) -3239-2860  
Email: [sales.jp@tanner.com](mailto:sales.jp@tanner.com)  
Web: [www.tanner.jp](http://www.tanner.jp)

#### Tanner Research Taiwan, Inc.

6F.-8, No. 8, Ziqiang S. Road  
Jhubei City  
Hsinchu County, 302, Taiwan  
Tel: 886(03)-6579108  
Fax: 886(03)-6579107  
Email: [sales.tw@tanner.com](mailto:sales.tw@tanner.com)  
Web: [www.tanner.com.tw](http://www.tanner.com.tw)

© 2009 Tanner Research. All rights reserved.  
All other company and/or product names are  
the property of their respective owners.